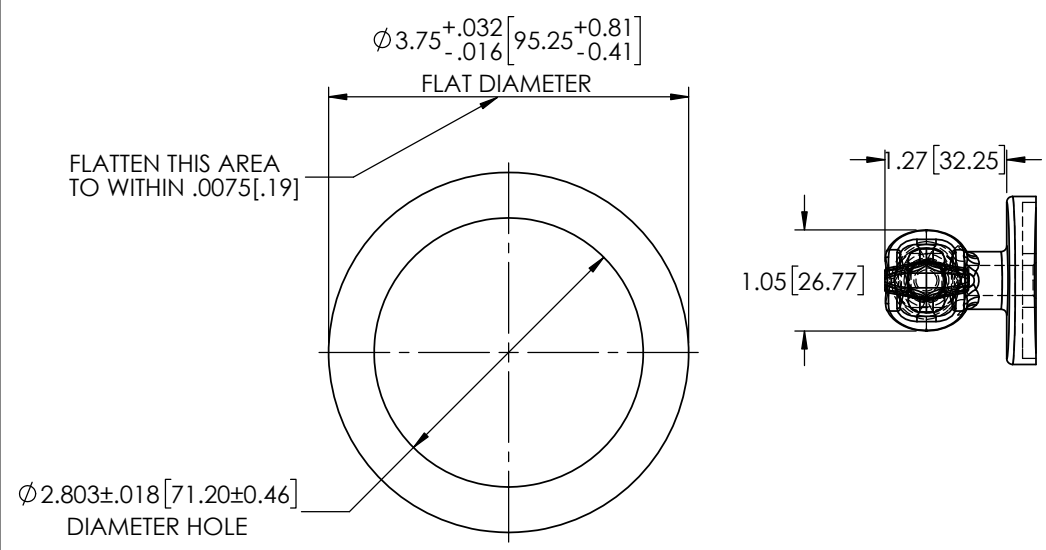
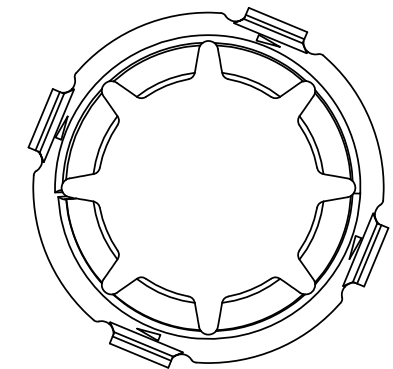
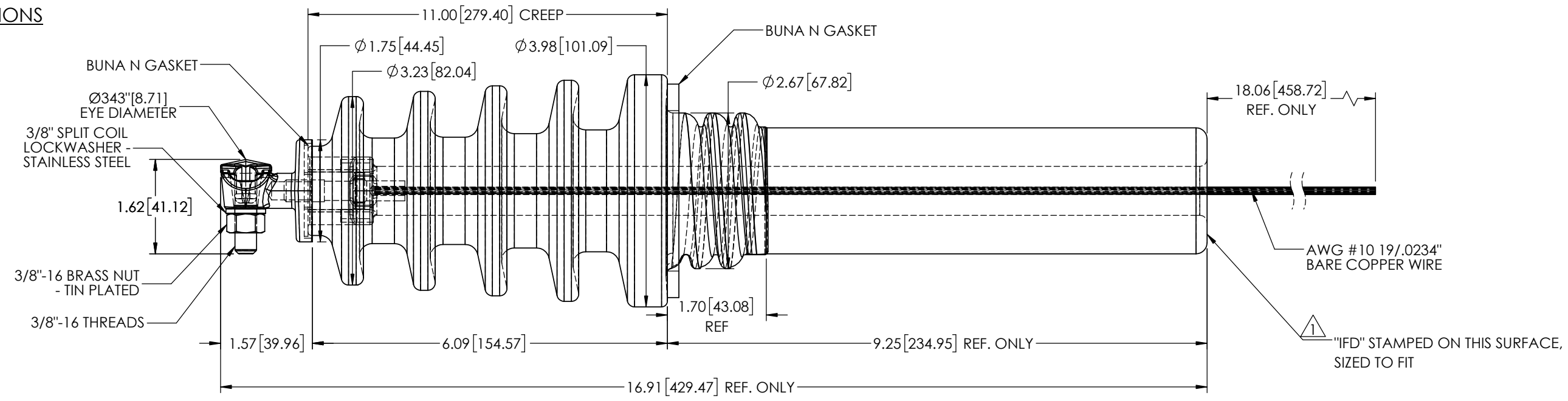


REVISIONS					
REV.	DATE	ECN #	DESCRIPTION	BY	APPROVED
1	3/2/2021	HJ21-036	ADDED "IFD" STAMP	OAD	BG
2	7/14/2023	HJ23-149	ADDED SPEC TABLE	OAD	CJT
3	7/19/2023	PQI F0047524	ADDED DIMENSIONS	OAD	CJT



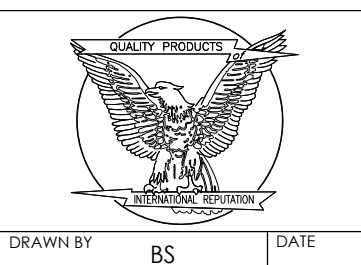
H.V. TANK HOLE DIMENSIONS



**STEEL SPIN-GRIP NUT
PACKED IN BULK**

SPECIFICATIONS		TECHNICAL CHARACTERISTICS	
	VALUE	COMPONENTS	MATERIAL
NOMINAL SYSTEM VOLTAGE	15kV	INSULATOR	WET PROCESS PORCELAIN
RATED CONTINUOUS CURRENT	50A	CONDUCTOR	N/A
BASIC IMPULSE LEVEL (BIL)	95kV	TERMINAL	
RATED FREQUENCY WITHSTAND (DRY) - 60s	35kV	TOP	C84400, TIN PLATED
RATED FREQUENCY WITHSTAND (WET) - 10s	30kV	BOTTOM	BARE COPPER WIRE
CREEP DISTANCE		GASKET	NITRILE BUNA N (Ø3.66" OD, Ø2.75" ID, .200" ±.010" THICK)
TOP	11" [279mm]	CLAMP	STEEL
BOTTOM	N/A	NOTES:	
STRIKE DISTANCE		1. PORCELAIN TOLERANCE ±3% WITH NOTHING LESS THAN ±.03", UNLESS OTHERWISE NOTED.	
TOP	6.09" [155mm]	2. MINIMUM OIL IMMERSION - 1" FROM PORCELAIN BOTTOM	
BOTTOM	N/A		
CANTILEVER OPERATING LOAD	102N		
CANTILEVER TEST LOAD	184N		
PORCELAIN COLOR	GRAY - MUNSELL 5BG 7.0/0.4		
APPROXIMATE WEIGHT	6.4lb [2.9kg]		

TOLERANCES (EXCEPT AS NOTED)	
DECIMAL	± .032"/.8mm
FRACTIONAL	±
ANGULAR	± 2 Degrees



THE H-J FAMILY OF COMPANIES 3010 HIGH RIDGE BLVD. HIGH RIDGE, MO. 63049 USA PHONE 1-636-677-3421 FAX 1-636-677-7808			
15 KV H.V. BUSHING ASSEMBLY			
MATERIAL (SEE DRAWING)			
CHK'D	APP'D	DRAWING NO.	
		AS1594-008	
DRAWN BY	DATE	SCALE	
BS	1/9/2014	N.T.S.	